



PROUD HISTORY-PRESERVING PARTNERS

1897 Clark County Jail Museum & Sheriff's Residence
Colby Rural Arts Museum
Dorchester Historical Center
Friends of Old School, Owen-Withee
Branstiter Museum, Greenwood
Loyal Area Historical Society

Spencer Area Historical Society
Stanley Area Historical Society
Thorp Area Historical Museum
Tufts Mansion, Neillsville
Willard Historical Society
Willard Settlers Park
Woodland Hotel, Owen

For more information, call Charlotte at 715-797-8403
Barns of Clark County: clarkcountywi.org/barns-map/

• clarkcountywi.org/visit-clark-county/attractions/
• Ghost Towns of Clark County: clarkcountywi.org/ghost-towns/

Join Today!



CLARK COUNTY
YOUNG PROFESSIONALS

clarkcountyp@gmail.com • 715-743-5308 • 715-255-9100

FREIGHT RAIL TRANSPORTATION

Contact Sheila Nyberg for more info
715-255-9151
sheila@clarkcountyedc.org

Clark County, WI
Public Libraries
Contact them for available business hours, story times and events!

CCEDC & Tourism supports our libraries by sharing information on Facebook of their events, classes, activities, and workshops.

Wisconsin Valley Library Service public library directory:
https://wvls.org/public_library_directory/

COMING SOON TO CLARK COUNTY!

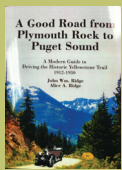
CLARK COUNTY CRIME STOPPERS

WORKING TO ENHANCE QUALITY OF LIFE THROUGH MARKETING



EXPLORE THE YELLOWSTONE TRAIL – IT'S PART OF US!

www.yellowstonetrail.org



The Clark County Community Foundation, Inc. (CCCF) is dedicated to benefiting citizens and communities of Clark County. Through vision, leadership,

and stewardship of gifts received, they strive to make a positive impact on the quality of life, here in Clark County. With the help of volunteers and donors, CCCF impacts the community by focusing on Clark County's needs, creating a way to meet those needs, providing positive opportunities for citizens, and helping build stronger communities. With a variety of Scholarships awarded each Spring, the CCCF provides financial support to students living in Clark County, as they pursue an education beyond high school. Through the Grant Application process each Fall, the Foundation provides financial assistance to successful applicants (communities and area non-profit organizations) to help them accomplish their programs, missions, and goals.



Fairgrounds Revitalization



Loyal Splash Pad



CLARK COUNTY ECONOMIC DEVELOPMENT CORP & TOURISM BUREAU

301 N Main St, PO Box 236 | Loyal, WI 54446

Phone: 715-255-9100 | Fax: 715-255-9153

www.clarkcountywi.org | info@clarkcountyedc.org

facebook.com/clarkcountytourism

We use email blasts to keep important info flowing to you! Send us your email to be added.



ADDRESSING CRITICAL HOUSING GROWTH NEEDS

New Housing – numerous new apartments have been created or upgraded and housing subdivisions are increasing throughout the County, continued housing development of all types is crucial.

The annual Average Clark County Unemployment Rate is 2.6%, therefore, Housing Growth must be on the Fast Track!

NEW Employees coming from outside the area – NEED NEW HOMES!

OVER 150 LOTS AVAILABLE THROUGHOUT THE COUNTY IN:

- Abbotsford
- Colby
- Curtiss
- Dorchester
- Granton
- Greenwood
- Loyal
- Neillsville
- Owen
- Stanley
- Thorp
- Withee

1. PICK YOUR SITE.
 - a. Stick build
 - b. Factory build
2. PICK YOUR BUILDER.
3. BUILD YOUR HOME!

2023 JOB OPPORTUNITIES
High growth area, high wage jobs available – still adding employees

Clark County, WI
EMPLOYMENT OPPORTUNITIES

Job Category Openings: 808

Employers with current job openings include:
Boon Subdivision, City of Abbotsford, City of Colby, City of Curtiss, City of Dorchester, City of Greenwood, City of Loyal, City of Neillsville, City of Owen, City of Stanley, City of Thorp, City of Withee, Clark County, CCEDC, Fairgrounds Revitalization, Loyal Splash Pad, Neillsville, Owen, Thorp, Withee, Wisconsin Valley Library Service, etc.

Employment listings

Looking to
RELOCATE?

NEED A NEW HOME?

Pick your site.
Pick your builder.
Build your home!

Lots Available

Relocation services

CCEDC marketing of available lots/jobs

CCEDC marketing of available lots/jobs



MidCountry Homes: Factory-built homes

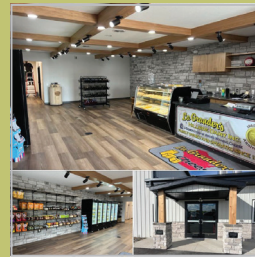


Home Builders: Built on site

CLARK COUNTY: ADDITIONAL GROWTH & INVESTMENT



Dollar General, Granton



LaGrander's, Stanley



K&S Performance & Repair LLC, Stanley



Metal Wholesale LLC, Owen



Simplicity Credit Union, Neillville



RESCO, Stanley



Witmer Furniture, Abbotsford



Parrett Windows & Doors, Dorchester

Congratulations



CCEDC WEBSITE FEATURES

- Visit
- Events Calendar
- Sites/Buildings
- Economic Development
- Jobs/Careers
- Fall Color Report
- Barns of Clark County
- Ghost Towns of Clark County
- Yellowstone Trail
- Art, Greenhouse, Harvest Moon, & Farmers Market Brochures
- Newsletter & Membership
- Other Important Topics
- Clark County Map
- Facebook Page
- Housing

clarkcountywi.org • Like us on Facebook & see what's going on in Clark County!



BUSINESS TO BUSINESS EXPO & CAREER FAIR

Mark your calendars for May 1, 2024. The event will again be hosted by CCEDC & TB at Clark Electric Cooperative Headquarters in Greenwood, WI. All businesses from our county/communities are invited. This B2B Expo portion - is a terrific way to meet your neighbors that are right here, that you may be able to partner with or learn about. We also bring in all the local/state/federal folks that have access to programs that can assist your business. Make great connections – do not miss this event. Call or email us to get your space! Registration and sponsorship are happening right now!!

Over 400 students from our Clark County and neighboring schools attended the 2023 Career Fair with more than 70 booths participating in the event. Our mission is to improve each company's local talent pipeline by connecting them with students, their parents, and educators at local/regional levels to inform them about each company, industry, and careers we have right here.

For additional information on current workforce/job opportunities, visit www.clarkcountywi.org and check out Jobs/Careers, call us directly at 715-255-9100, or e-mail us at: info@clarkcountyedc.org.



Momentum West 2023 Awards Ceremony



Top Redevelopment Project



Lisenby Properties

Mark & Lynda Lisenby redeveloped the vacated Memorial Medical Center in Neillville. The facility offers 1-, 2-, and 3-bedroom apartments, upscale features, a coffee shop, fitness facility, dog park, arboretum, and is within walking distance to downtown.

Regional Collaboration Award



Wuethrich Family Foundation

The Wuethrich Family Foundation and Grassland Dairy Products, Inc., of Greenwood, provided cumulative support of \$1 million to UW River Falls dairy program. Following this transformational gift, the University of Wisconsin - River Falls Dairy Pilot Plant will now be known as the Wuethrich Family/Grassland Dairy Center of Excellence, opening this spring.

Entrepreneur of the Year



Holland Family Cheese

Rolf and Mariëke Penterman were born and raised in the Netherlands, moving to the U.S. in 2002 to operate a dairy farm in Thorp, WI, operated under Penterman Farm, LLC. In 2006, Mrs. Penterman opened Holland's Family Cheese (HFC), which utilizes milk from Penterman Farm to produce authentic Dutch Gouda cheese under the brand Mariëke® Gouda.

Top Developmental Projects of the Year



Northside Elevator

Northside Elevator, based out of Loyal, has been working with the Chippewa Economic Development Corporation, CN Railroad, and the City of Stanley on their new west Stanley Industrial Park expansion. The project includes a new \$20 million masterplanned facility complex containing warehouses, office space, a fertilizer plant tower system, and a corn drying bin.